

# **A46 Coventry Junctions (Walsgrave) Scheme Number: TR010066**

## **6.2 Environmental Statement Figures**

### **Figure 2.2 Order Limits**

APFP Regulation 5(1)(a)

Planning Act 2008  
Infrastructure Planning (Applications: Prescribed Forms  
and Procedure) Regulations 2009

Volume 6

November 2024

Infrastructure Planning

Planning Act 2008

The Infrastructure Planning  
(Applications: Prescribed Forms and  
Procedure) Regulations 2009

A46 Coventry Junctions (Walsgrave)  
Development Consent Order 202[x]

ENVIRONMENTAL STATEMENT FIGURES  
Figure 2.2 Order Limits

Regulation Number	Regulation 5(2)(a)
Planning Inspectorate Scheme Reference	TR010066
Application Document Reference	TR010066/APP/6.2
Author	A46 Coventry Junctions (Walsgrave) Project Team, National Highways

Version	Date	Status of Version
Rev 0	November 2024	Application Issue

---

## CONTENTS

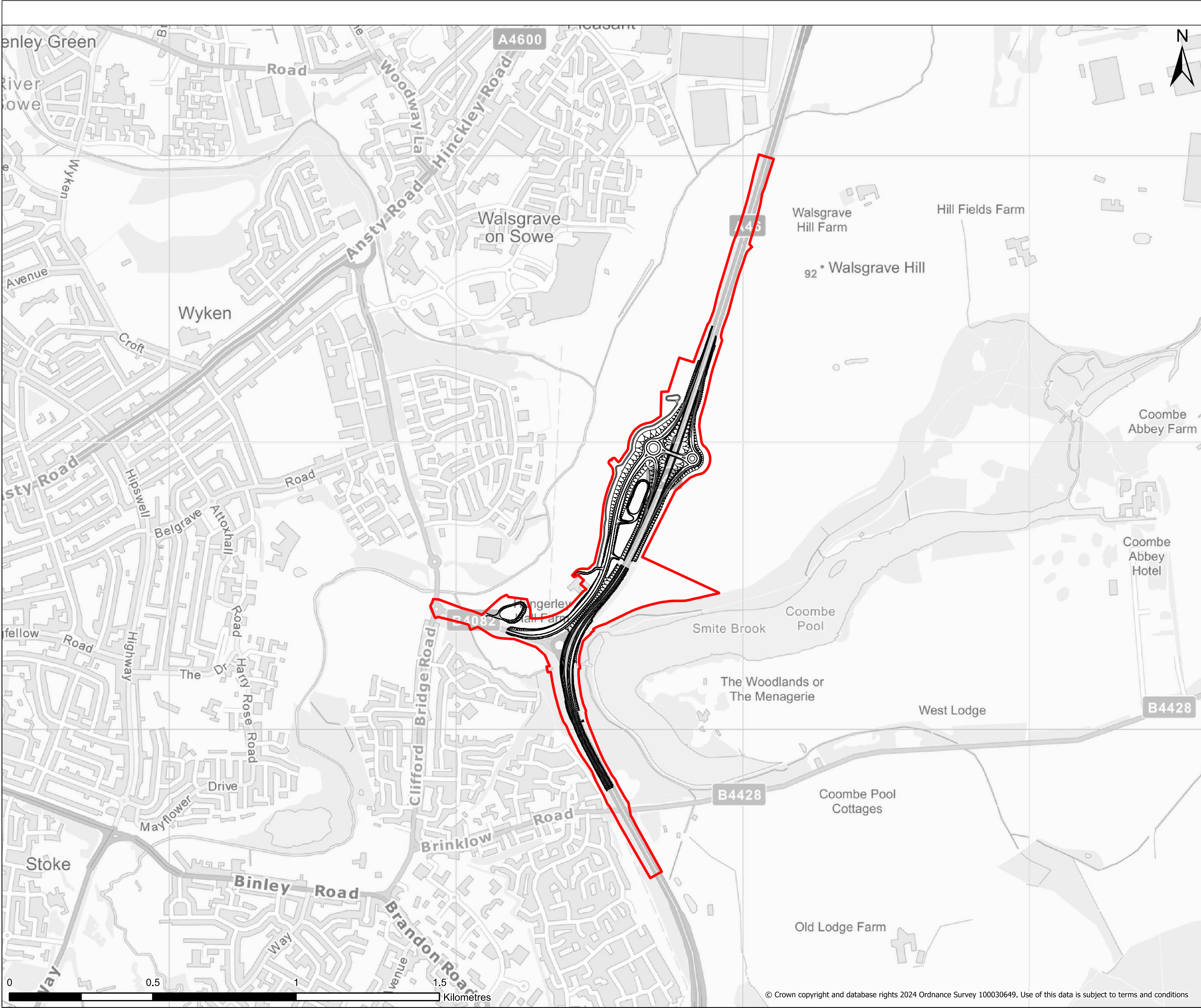
1.	Environmental Statement Figure.....	2
----	-------------------------------------	---

# 1. Environmental Statement Figure

1.1.1. This document contains the following figures:

Figure	Figure Name
2.2	Order Limits





**Legend**  

Order Limits

Proposed Design

Contains public sector information licensed under the Open Government Licence v3.0.

Contains OS data © Crown Copyright and database right 2020

P01	05.11.2024	FIRST ISSUE	AC	BM	JS
REV	DATE	REVISION NOTE	ORG	CHKD	APP
Client					
Project Title					
A46 COVENTRY JUNCTIONS (WALSgrave)					
Project Stage					
DCO APPLICATION					
Drawing Title					
FIGURE 2.2 - ORDER LIMITS					
Suitability					
FOR INFORMATION					
Sheet Size	Scale	Status	Revision		
A3	1:12,500	S2	P01		
Drawing Number					
HE604820-OIL-EGN-00-DR-LX-30009					

© Crown copyright and database rights 2024 Ordnance Survey 100030649. Use of this data is subject to terms and conditions